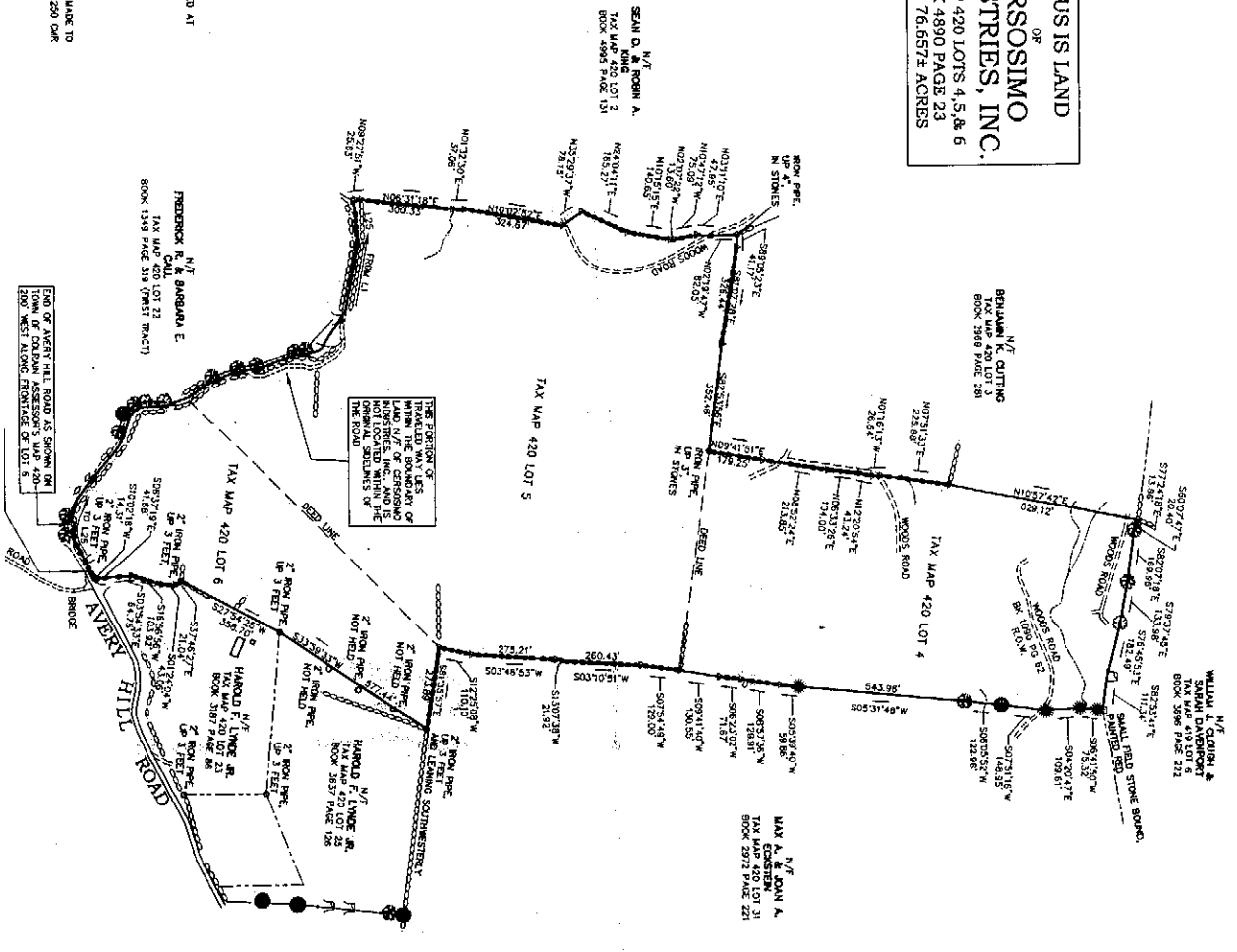


LOCUS IS LAND
 OF
CERSOSIMO
INDUSTRIES, INC.
 TAX MAP 420 LOTS 4, 5, & 6
 BOOK 4890 PAGE 23
 AREA= 76.0572 ACRES

LINE	BEARING	LENGTH
1	S87°14'42"E	138.72'
2	S88°18'18"E	133.56'
3	S88°18'18"E	133.56'
4	S87°14'42"E	138.72'
5	S88°18'18"E	133.56'
6	S88°18'18"E	133.56'
7	S88°18'18"E	133.56'
8	S88°18'18"E	133.56'
9	S88°18'18"E	133.56'
10	S88°18'18"E	133.56'
11	S88°18'18"E	133.56'
12	S88°18'18"E	133.56'
13	S88°18'18"E	133.56'
14	S88°18'18"E	133.56'
15	S88°18'18"E	133.56'
16	S88°18'18"E	133.56'
17	S88°18'18"E	133.56'
18	S88°18'18"E	133.56'
19	S88°18'18"E	133.56'
20	S88°18'18"E	133.56'
21	S88°18'18"E	133.56'
22	S88°18'18"E	133.56'
23	S88°18'18"E	133.56'
24	S88°18'18"E	133.56'
25	S88°18'18"E	133.56'
26	S88°18'18"E	133.56'
27	S88°18'18"E	133.56'
28	S88°18'18"E	133.56'
29	S88°18'18"E	133.56'
30	S88°18'18"E	133.56'
31	S88°18'18"E	133.56'
32	S88°18'18"E	133.56'
33	S88°18'18"E	133.56'
34	S88°18'18"E	133.56'
35	S88°18'18"E	133.56'
36	S88°18'18"E	133.56'
37	S88°18'18"E	133.56'
38	S88°18'18"E	133.56'
39	S88°18'18"E	133.56'
40	S88°18'18"E	133.56'
41	S88°18'18"E	133.56'
42	S88°18'18"E	133.56'
43	S88°18'18"E	133.56'
44	S88°18'18"E	133.56'
45	S88°18'18"E	133.56'
46	S88°18'18"E	133.56'
47	S88°18'18"E	133.56'
48	S88°18'18"E	133.56'
49	S88°18'18"E	133.56'
50	S88°18'18"E	133.56'
51	S88°18'18"E	133.56'
52	S88°18'18"E	133.56'
53	S88°18'18"E	133.56'
54	S88°18'18"E	133.56'
55	S88°18'18"E	133.56'
56	S88°18'18"E	133.56'
57	S88°18'18"E	133.56'
58	S88°18'18"E	133.56'
59	S88°18'18"E	133.56'
60	S88°18'18"E	133.56'
61	S88°18'18"E	133.56'
62	S88°18'18"E	133.56'
63	S88°18'18"E	133.56'
64	S88°18'18"E	133.56'
65	S88°18'18"E	133.56'
66	S88°18'18"E	133.56'
67	S88°18'18"E	133.56'
68	S88°18'18"E	133.56'
69	S88°18'18"E	133.56'
70	S88°18'18"E	133.56'
71	S88°18'18"E	133.56'
72	S88°18'18"E	133.56'
73	S88°18'18"E	133.56'
74	S88°18'18"E	133.56'
75	S88°18'18"E	133.56'

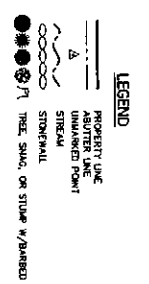
MAP REFERENCES
 1. FORESTER'S SKETCH OF LOCUS LOTS FILED WITH GARDEN TITLE IN BOOK 4890 PAGE 24, RECORDED AT THE FRANKLIN COUNTY REGISTER OF DEEDS.

NOTES
 1. THIS SURVEY AND PLAN ARE BASED ON A TOTAL STATION AND DATA COLLECTOR SURVEY, AND IS MADE TO THE STANDARD CARE OF PROFESSIONAL SURVEYORS PRACTICING IN THE STATE OF MASSACHUSETTS (250 CMR 8.01)
 2. THE STATIONS ON THIS PLAN ARE REINFORCED TO THE UTTERMOST OF WOODEN NAILS, AND WAS REINFORCED WITH IRON NAILS AND WELDED STEEL CROWBAR.



PLAN OF LAND (INRA LOT 2)
 IN
 COLRAIN (FRANKLIN COUNTY)
 SURVEYED FOR
CERSOSIMO INDUSTRIES, INC.

DATE: _____
 BY: RAR
 CHK BY: _____



CERTIFICATION

THE PROPERTY LINES SHOWN ARE THE LINES DIVIDING EXISTING OWNERSHIP AND THE LINES OF STREETS AND WAYS ALREADY ESTABLISHED AND NO NEW LINES FOR DIVISION OF EXISTING OWNERSHIP OR FOR NEW WAYS ARE SHOWN.

I CERTIFY THAT THIS PLAN HAS BEEN PREPARED IN ACCORDANCE WITH THE RULES AND REGULATIONS OF THE BOARD OF REGISTRATION OF PROFESSIONAL SURVEYORS OF MASSACHUSETTS.

 RICHARD A. ROBERTS, P.L.S.
 DATE: _____

FOR REVISION USE ONLY